

BONUS PLAN



Glossary:

1. Bonus plan is a remuneration plan.
2. Bonus is a reward for personal promotion of sales or increase in sales from the work of the partner structure.
3. **BO** stands for Back Office of the User on the company's website.
4. **Payment exchange rate** is the internal rate used to calculate the remuneration amount in any currency/
5. **Bonus exchange rate** is the internal rate for conversion into any currency.
6. **Unit** is the internal payment unit for settlement of accounts between the company and EVORICH partners/
7. **PS** stands for Personal Sales.
8. **PP** stands for Personal Purchases.
9. **SS** means Sales from the Structure.
10. **TSV** is Total Structure Volume, which includes both personal sales and personal purchases.
11. **PPV** is Personal Purchase Volume.
12. **Level** is a tier in a team (structure).
13. **Status** means qualification of registered users. Statuses depend on the work performed.
14. **Structure** means down-the-line partners, customers and users.



The partner (affiliate) program is a great opportunity to get an additional source of income that may exceed your main income over time.



We are open for transparent and mutually beneficial partnerships and will be glad to see you among our partners.



There are 2 **ranks** and 8 **statuses** in the partner program.

USER



REFERRAL BONUS	
LEVEL	USER'S COMMISSION
1	5%
2	3%
3	2%

Remuneration

User can receive bonus units under the Partner Program. For that, they need to accept the Terms of Use and make sure to complete the account verification.

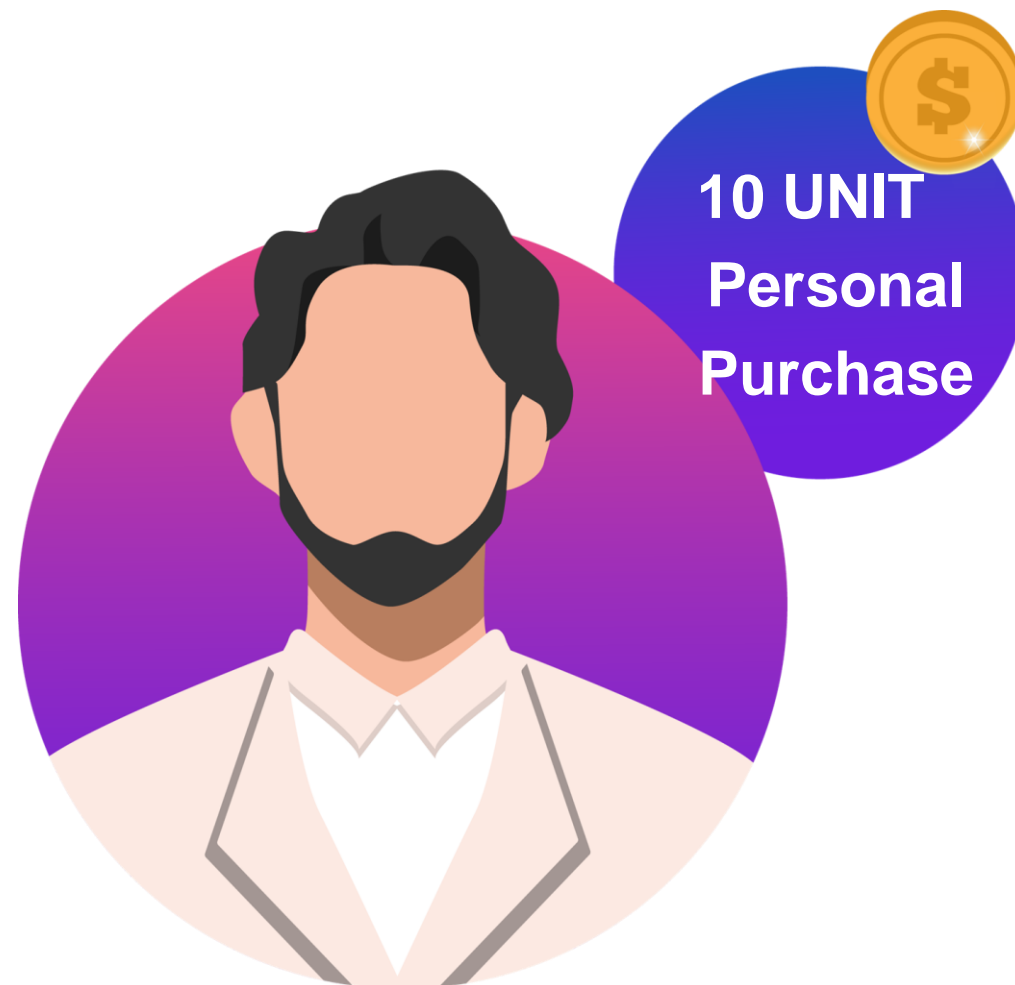
Qualification Conditions

User needs to register in the Back Office.

Withdrawal

User can spend the received bonus units within Evorich Ecosystem.

CLIENT



REFERRAL BONUS		
LEVEL	CLIENT'S COMMISSION	DIFFERENCE FROM THE PREVIOUS LEVEL "USER"
1	6%	5%
2	4%	3%
3	3%	2%
4	2%	

Remuneration

Client can receive bonus units under the Partner Program. For that, they need to accept the Terms of Use and make sure to complete the account verification.

Qualification Conditions

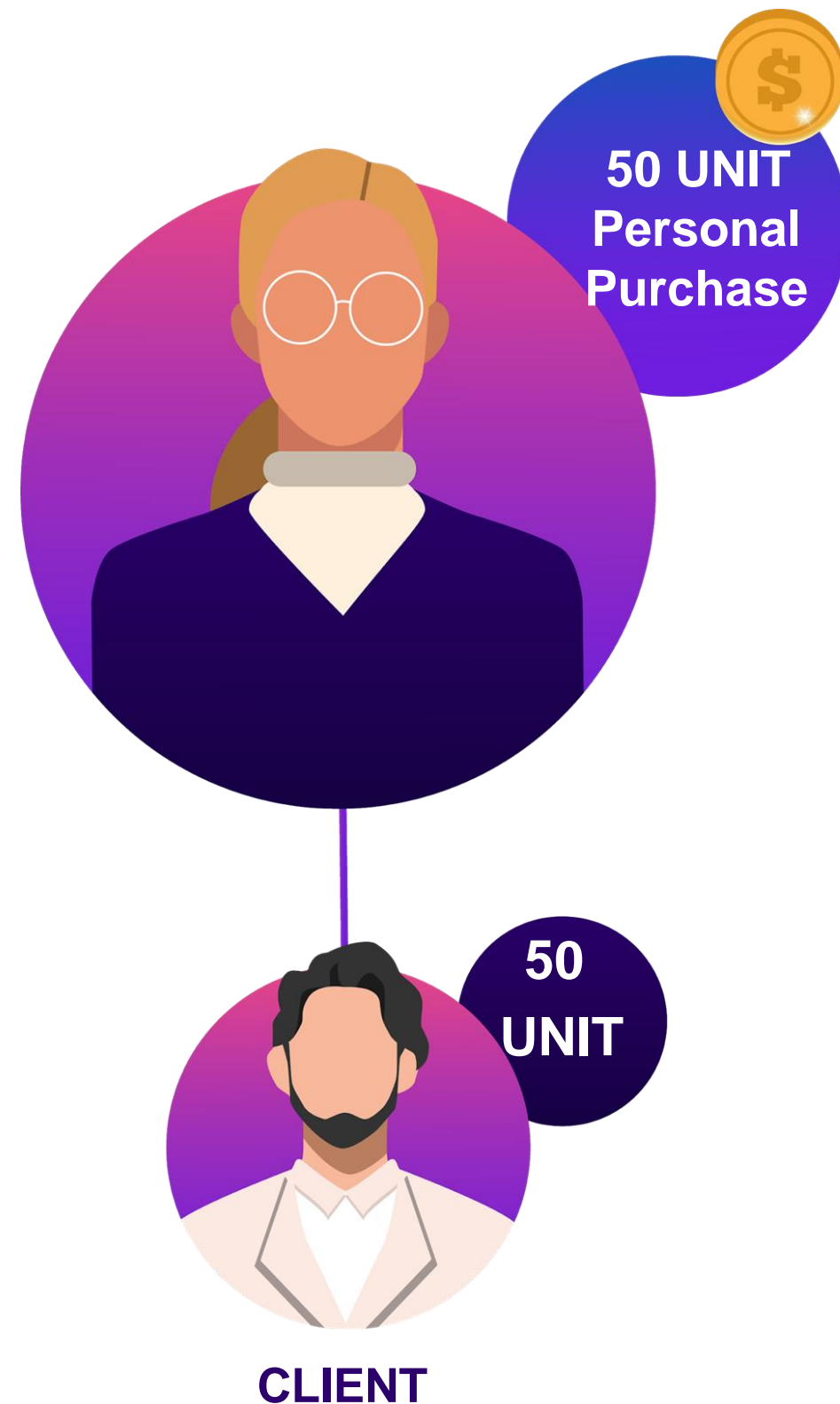
Registered and verified who made a purchase in the EVORICH ecosystem for 10 units or more.

Required rank User.

Withdrawal

Client can spend the received bonus units within Evorich Ecosystem.

PARTNER



Withdrawal

Withdrawal of bonuses from the Bonus Account is possible if the total personal purchase amount is 50 units and more, withdrawal is only possible from the Bonus Account.



REFERRAL BONUS

LEVEL	PARTNER'S COMMISSION	DIFFERENCE FROM THE PREVIOUS LEVEL "CLIENT"
1	7%	6%
2	5%	4%
3	4%	3%
4	3%	2%
5	2%	

Remuneration

Partner can receive bonus units under the Partner Program. For that, they need to accept the Terms of Use and make sure to complete the account verification.

Qualification Conditions

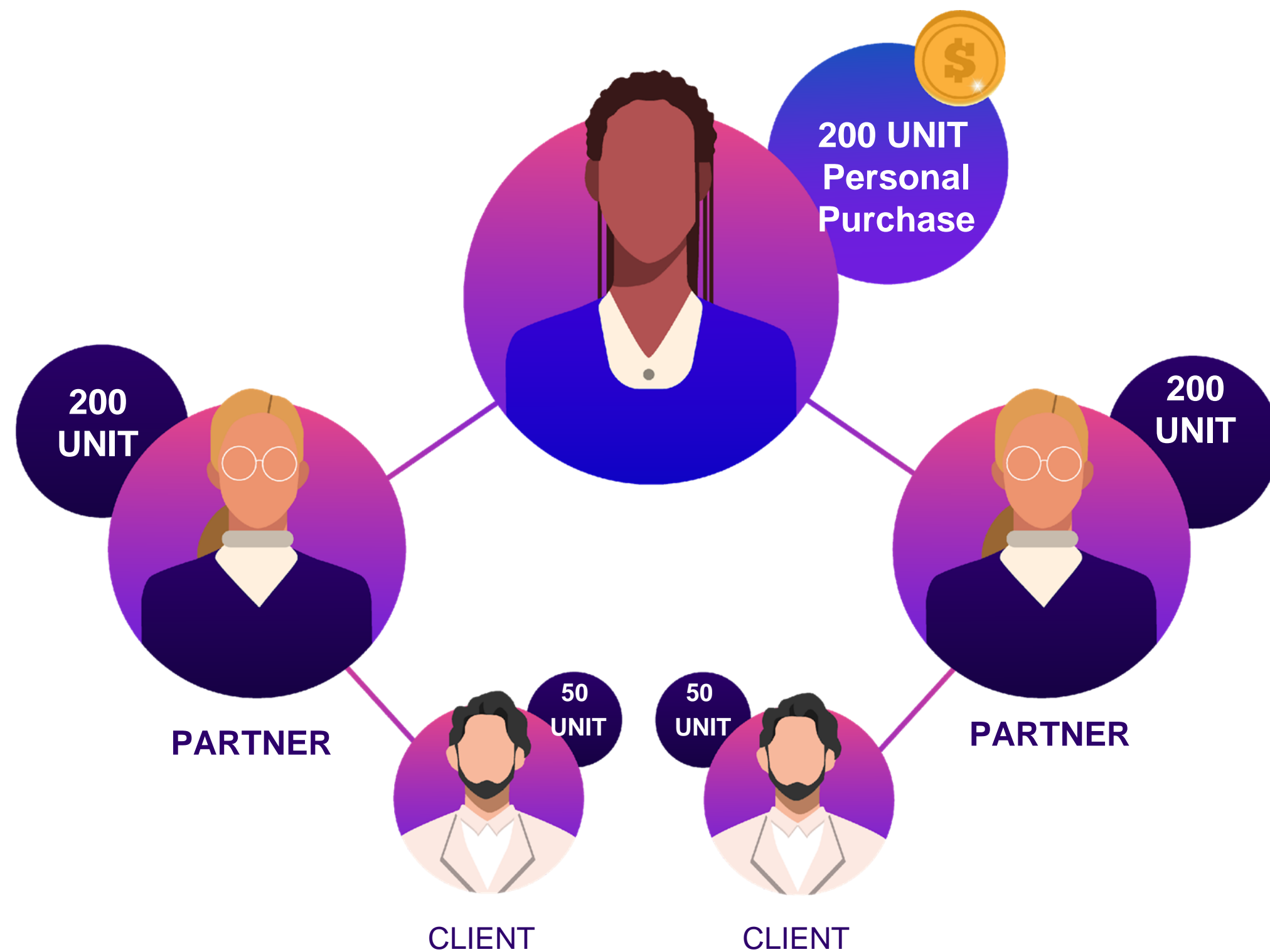
Registered and verified user who made a purchase in the EVORICH ecosystem for 50 units

or more.

Required rank: Client.

One or more registered users on the first level with a minimum purchase volume of 50 units and more.

AGENT



REFERRAL BONUS		
LEVEL	AGENT'S COMMISSION	DIFFERENCE FROM THE PREVIOUS LEVEL "PARTNER"
1	8%	7%
2	7%	5%
3	5%	4%
4	4%	3%
5	3%	2%
6		

Remuneration

Agent can receive bonus units under the Partner Program. For that, they need to accept the Terms of Use and make sure to complete the account verification.

Qualification Conditions

Required status: Partner.

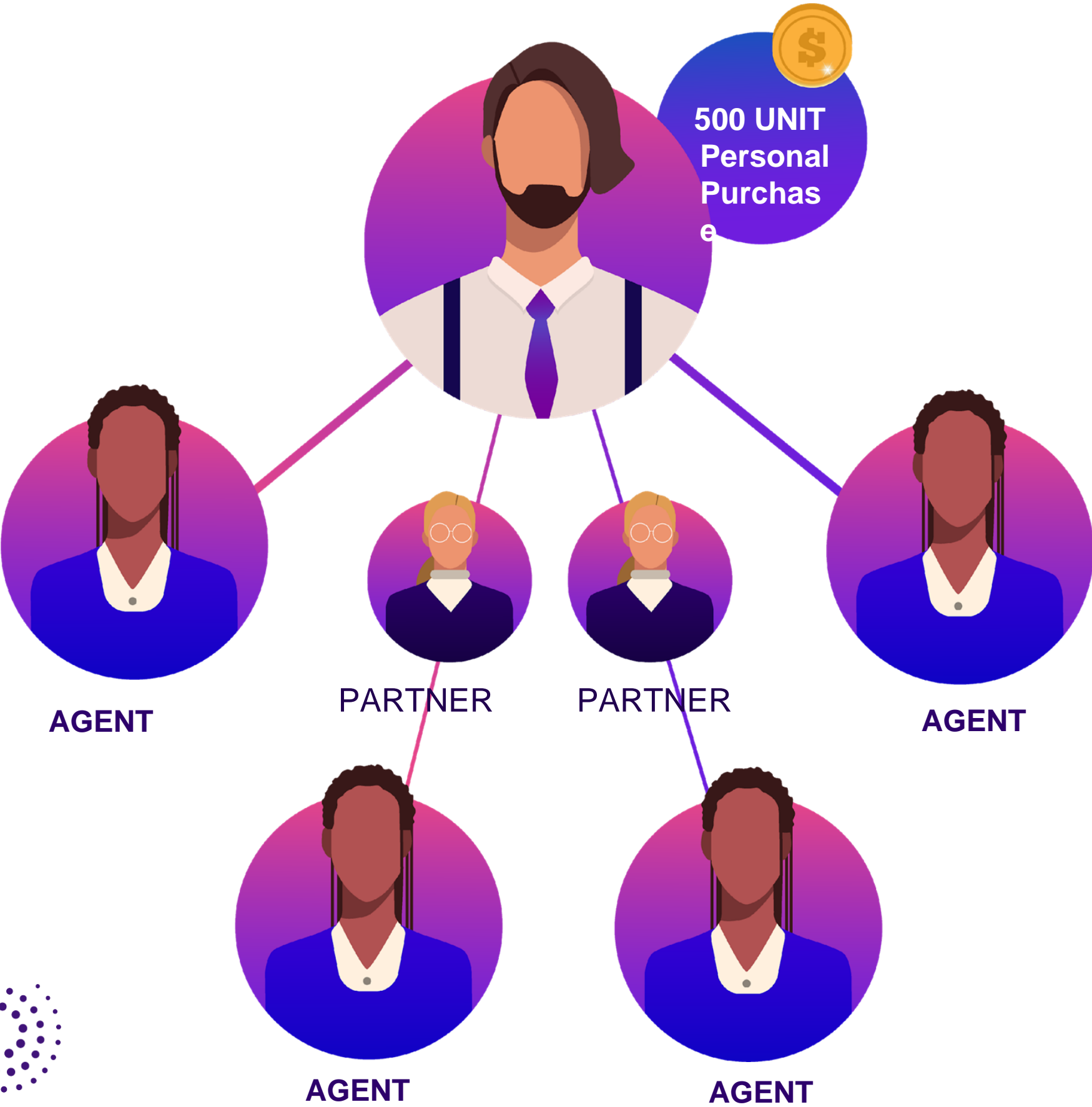
Must make a personal purchase for a total of 200 units.

Must attract 2 Partners to the first level, each of which should make a personal purchase for a total of 200 units and more.

Withdrawal

Minimum withdrawal amount from the Bonus account is 50 units.

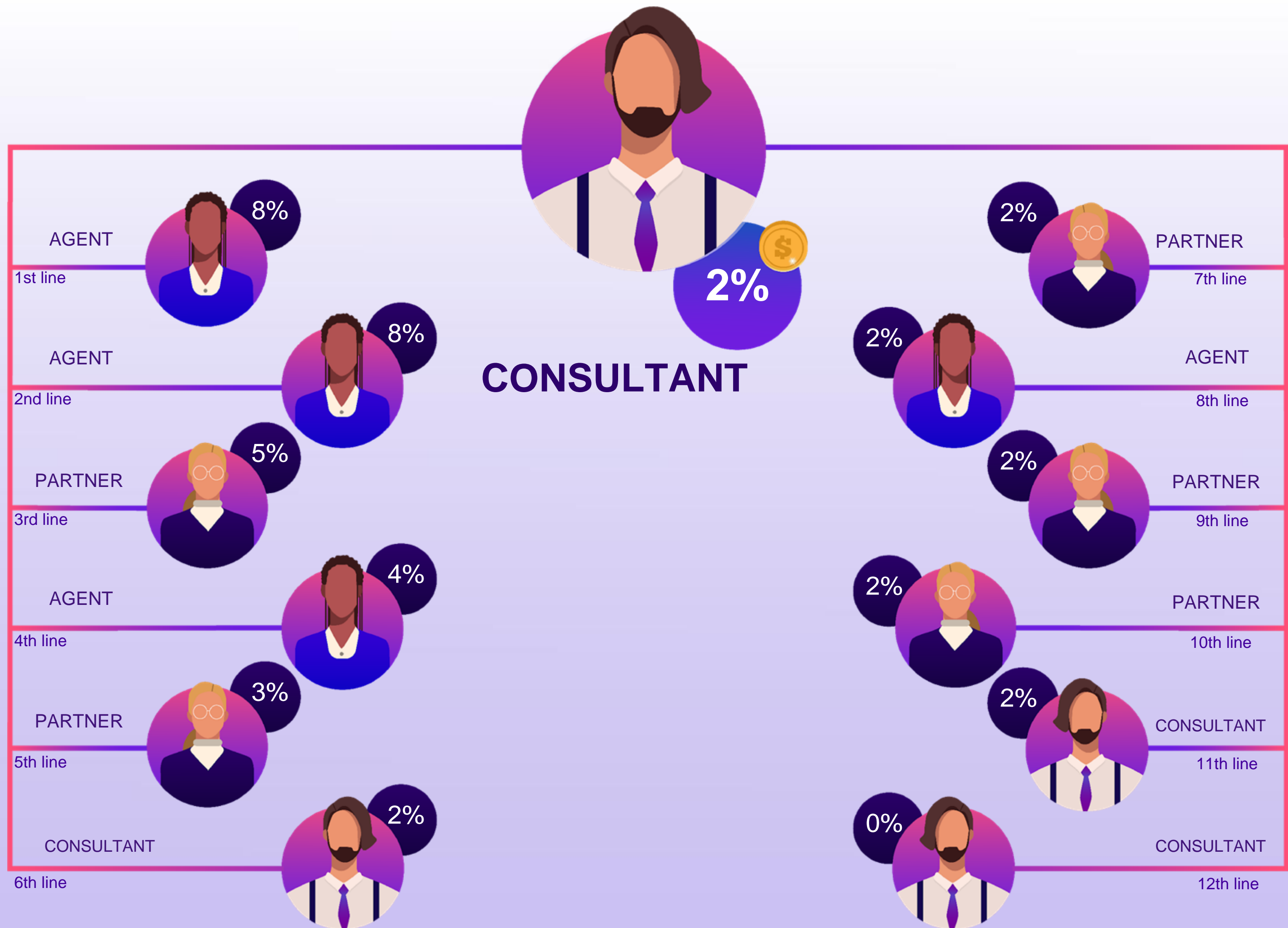
CONSULTANT



REFERRAL BONUS		
LEVEL	CONSULTANT'S COMMISSION	DIFFERENCE FROM THE PREVIOUS LEVEL "AGENT"
1	8%	8%
2	8%	7%
3	5%	5%
4	4%	4%
5	3%	3%
6**	from 2 to 4%	

Qualification Conditions

- Required status: Agent.
- Must make a personal purchase for a total of 500 units or more.
- Must have 4 persons with the status of Agent and higher in 4 structures, of which at least 2 persons with the status of Agent and higher should be personally recruited to the first level and 2 Agents and higher in depth in two other structures or 4 Agents in 4 structures on the first level.



CONSULTANT

Remuneration

Consultant can receive bonus units under the Partner Program. For that, they need to accept the Terms of Use and make sure to complete the account verification.

When you achieve the status of Consultant, the income from the 6th line to infinity will be 2% to 4% in units.

Here's how you can increase it:

- to get 2.5% in units, attract to your 1st line one Consultant;
- to get 3% in units, attract to your 1st line a second Consultant;
- to get 3.5% in units, attract to your 1st line a third Consultant;
- to get 4% in units, attract to your 1st line a fourth Consultant;

You become Manager and get 4% from the 6th level to infinity.

Withdrawal

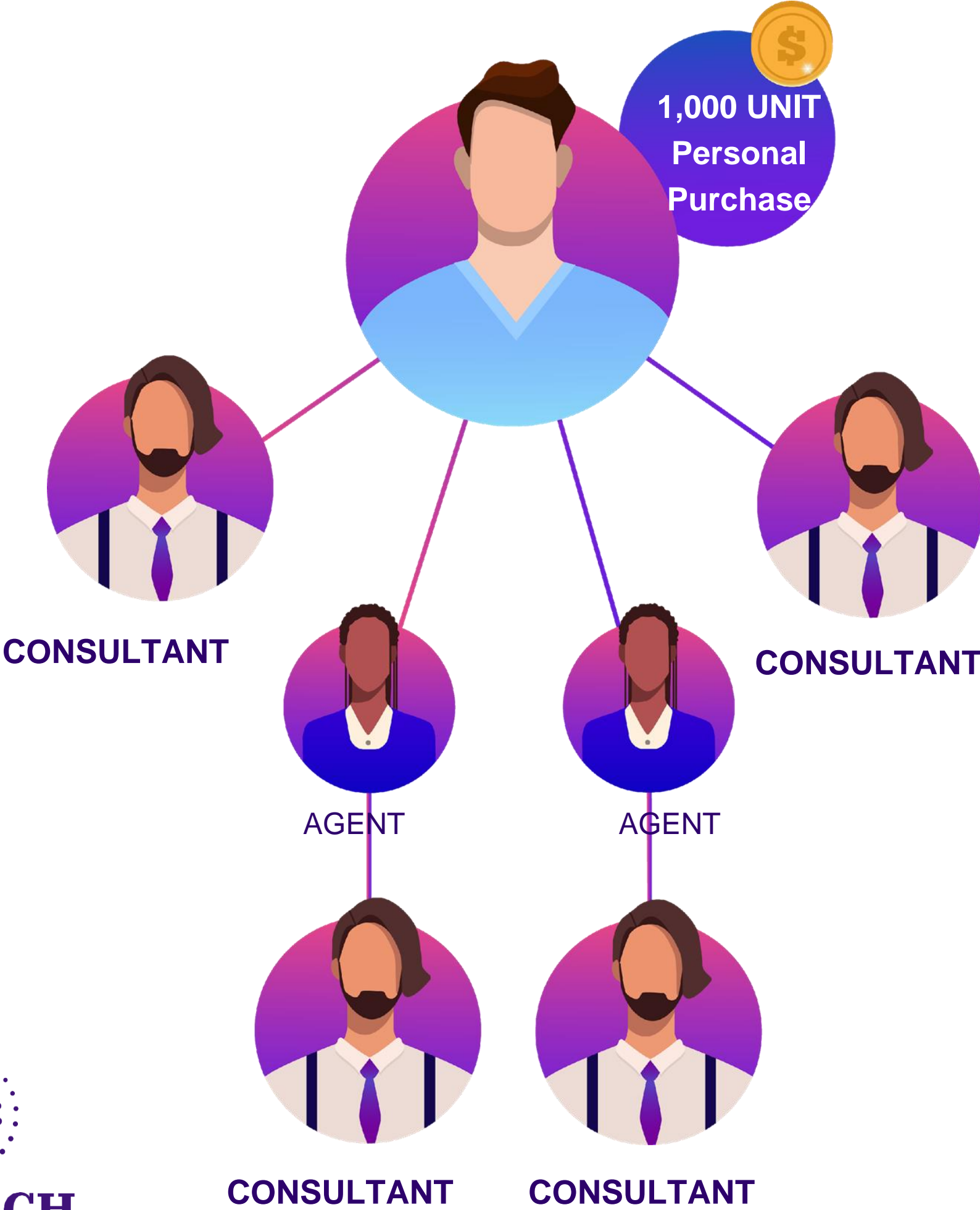
Minimum withdrawal amount from the Bonus account is 50 units.

Commissions from 2% to 4% from the 6th level to infinity are reallocated depending on the number of qualified partners in your first line. These conditions can only be accessed by qualified Consultants and above.



EVORICH

MANAGER



REFERRAL BONUS		
LEVEL	MANAGER'S COMMISSION	DIFFERENCE FROM THE PREVIOUS LEVEL "CONSULTANT"
1	8%	8%
2	8%	8%
3	5%	5%
4	4%	4%
5	3%	3%
6** and lower	4% to 6.5%	from 2 to 4%

Remuneration

Manager can receive bonus units under the Partner Program. For that, they need to accept the Terms of Use and make sure to complete the account verification.

Qualification Conditions

Required status: Consultant.
Must make a personal purchase for a total of 1,000 units or more.
Must have 4 persons with the status of Consultant and higher in 4 structures, of which at least 2 persons with the status of Consultant and higher should be personally recruited to the first level and 2 Consultants and higher in depth in two other structures or 4 Consultants in 4 structures on the first level.

MANAGER

When you achieve the status of Manager, the income from the 6th line to infinity will be 4% to 6.5% in units.

Here's how you can increase it:

- to get 5% in units, attract to your 1st line one Manager;
- to get 5.5% in units, attract to your 1st line a second Manager;
- to get 6% in units, attract to your 1st line a third Manager;
- to get 6.5% in units, attract to your 1st line a fourth Manager;

You become Leader Manager and get 6.5 % from the 6th level to infinity.

*Commissions from 4 to 6.5% from the 6th level to infinity are reallocated depending on the number of qualified partners in your first line. These conditions can only be accessed by qualified Consultants and above.

Withdrawal

Minimum withdrawal amount from the Bonus account is 50 units.

Additional prerequisites

Compulsory participation in an annual training course from Evorich or its partners in education with a subsequent test to be taken within 6 months after the training and passed with a score of more than 55%.

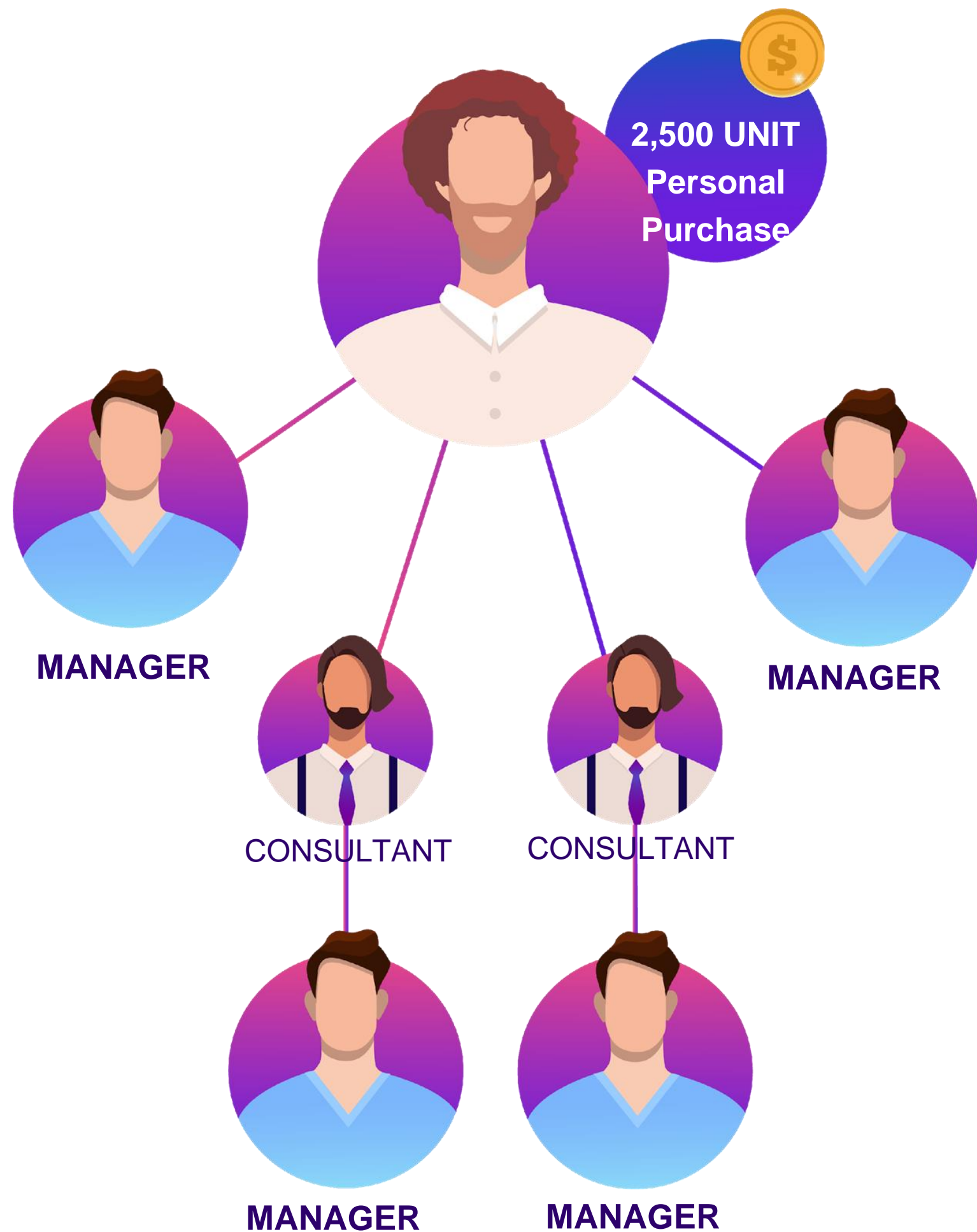
If the test score is lower than 55%, the status is automatically downgraded to Consultant.

(The status is automatically restored when the test is passed with the score of 55% or higher).



EVORICH

LEADER MANAGER



REFERRAL BONUS		
LEVEL	LEADER MANAGER'S COMMISSION	DIFFERENCE FROM THE PREVIOUS LEVEL "MANAGER"
1	8%	8%
2	8%	8%
3	5%	5%
4	4%	4%
5	3%	3%
6** and lower	from 6.5 to 8%	from 4 to 6.5%

Remuneration

Leader Manager can receive bonus units under the Partner Program. For that, they need to accept the Terms of Use and make sure to complete the account verification.

Qualification Conditions

Required status: Manager.

Must make a personal purchase for a total of 2,500 units or more.

Must have 4 persons with the status of Manager and higher in 4 structures, of which at least 2 persons with the status of Manager and higher should be personally recruited to the first level and 2 Managers and higher in depth in two other structures or 4 Managers in 4 structures on the first level.

LEADER MANAGER

When you achieve the status of Leader Manager, the income from the 6th line to infinity will be 6.5% to 8% in units.

Here's how you can increase it:

- to get 7% in units, attract to your 1st line one Leader Manager;
- to get 7.3% in units, attract to your 1st line a second Leader Manager;
- to get 7.6% in units, attract to your 1st line a third Leader Manager;
- to get 8% in units, attract to your 1st line a fourth Leader Manager;

You become Top Manager and get 8% from the 6th level to infinity.

*Commissions from 6.5 to 8% from the 6th level to infinity are reallocated depending on the number of qualified partners in your first line. These conditions can only be accessed by qualified Consultants and above.

Withdrawal

Minimum withdrawal amount from the Bonus account is 50 units.

Additional prerequisites

Compulsory participation in an annual training course from Evorich or its partners in education with a subsequent test to be taken within 6 months after the training and passed with a score of more than 55%.

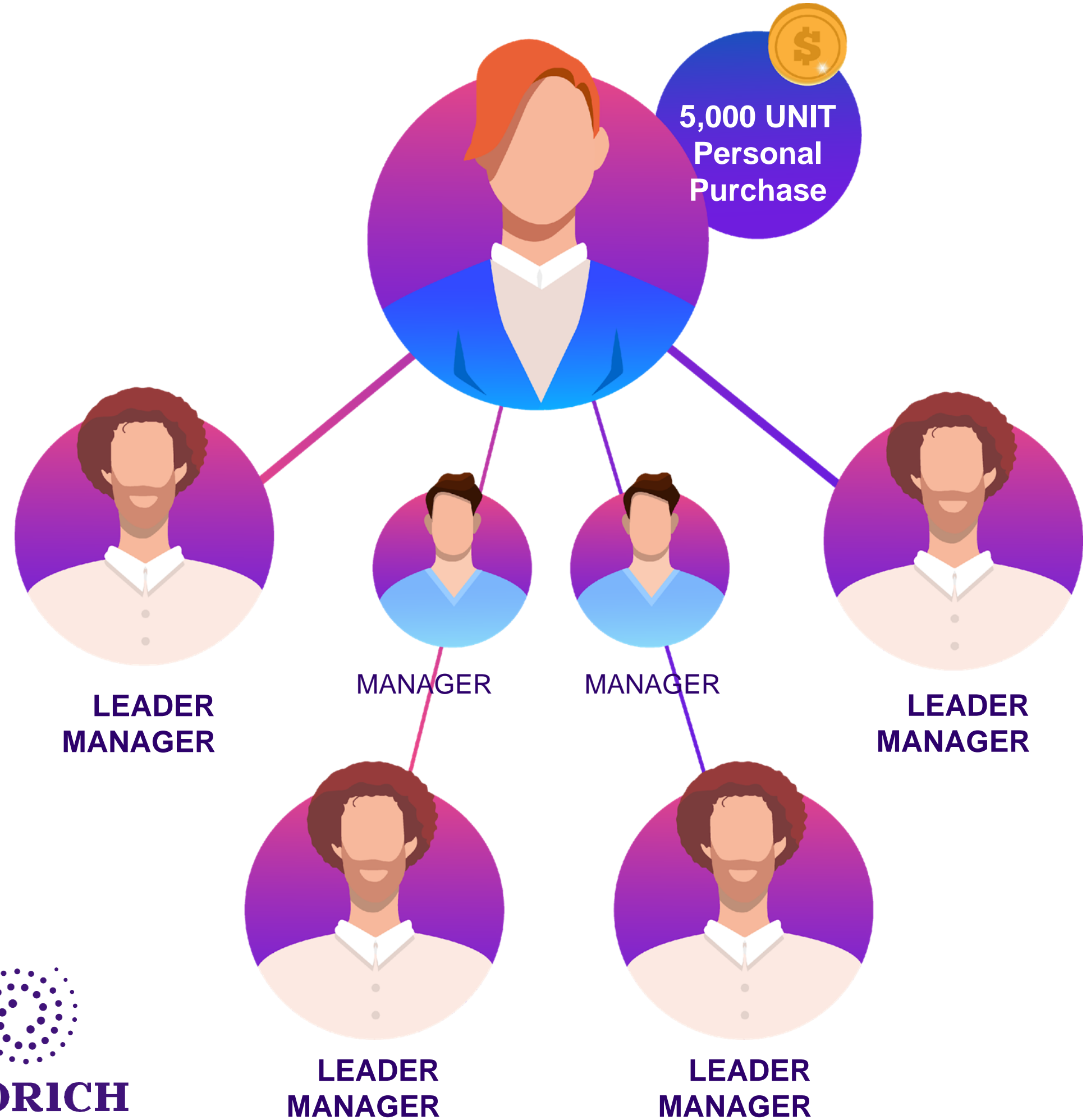
If the test score is lower than 55%, the status is automatically downgraded to Manager.

(The status is automatically restored when the test is passed with the score of 55% or higher).



EVORICH

TOP MANAGER



REFERRAL BONUS		
LEVEL	TOP MANAGER'S COMMISSION	DIFFERENCE FROM THE PREVIOUS LEVEL "LEADER MANAGER"
1	8%	8%
2	8%	8%
3	5%	5%
4	4%	4%
5	3%	3%
6* and lower	from 8 to 9%	from 6,5 to 8%

Remuneration

Top Manager can receive bonus units under the Partner Program. For that, they need to accept the Terms of Use and make sure to complete the account verification.

Qualification Conditions

Required status: Leader Manager.
Must make a personal purchase for a total of 5,000 units or more.
Must have 4 persons with the status of Leader Manager and higher in 4 structures, of which at least 2 persons with the status of Leader Manager and higher should be personally recruited to the first level and 2 Leader Managers and higher in depth in two other structures or 4 Leader Managers in 4 structures on the first level.

TOP MANAGER

When you achieve the status of Top Manager, the income from the 6th line to infinity will be 8% to 9% in units.

Here's how you can increase it:

- to get 8.5% in units, attract to your 1st line one Top Manager;
- to get 9% in units, attract to your 1st line a second Top Manager;

You become Vice President and get 9% from the 6th level to infinity.

*Commissions from 8 to 9% from the 6th level to infinity are reallocated depending on the number of qualified partners in your first line. These conditions can only be accessed by qualified Consultants and above.

Withdrawal

Minimum withdrawal amount from the Bonus account is 50 units.

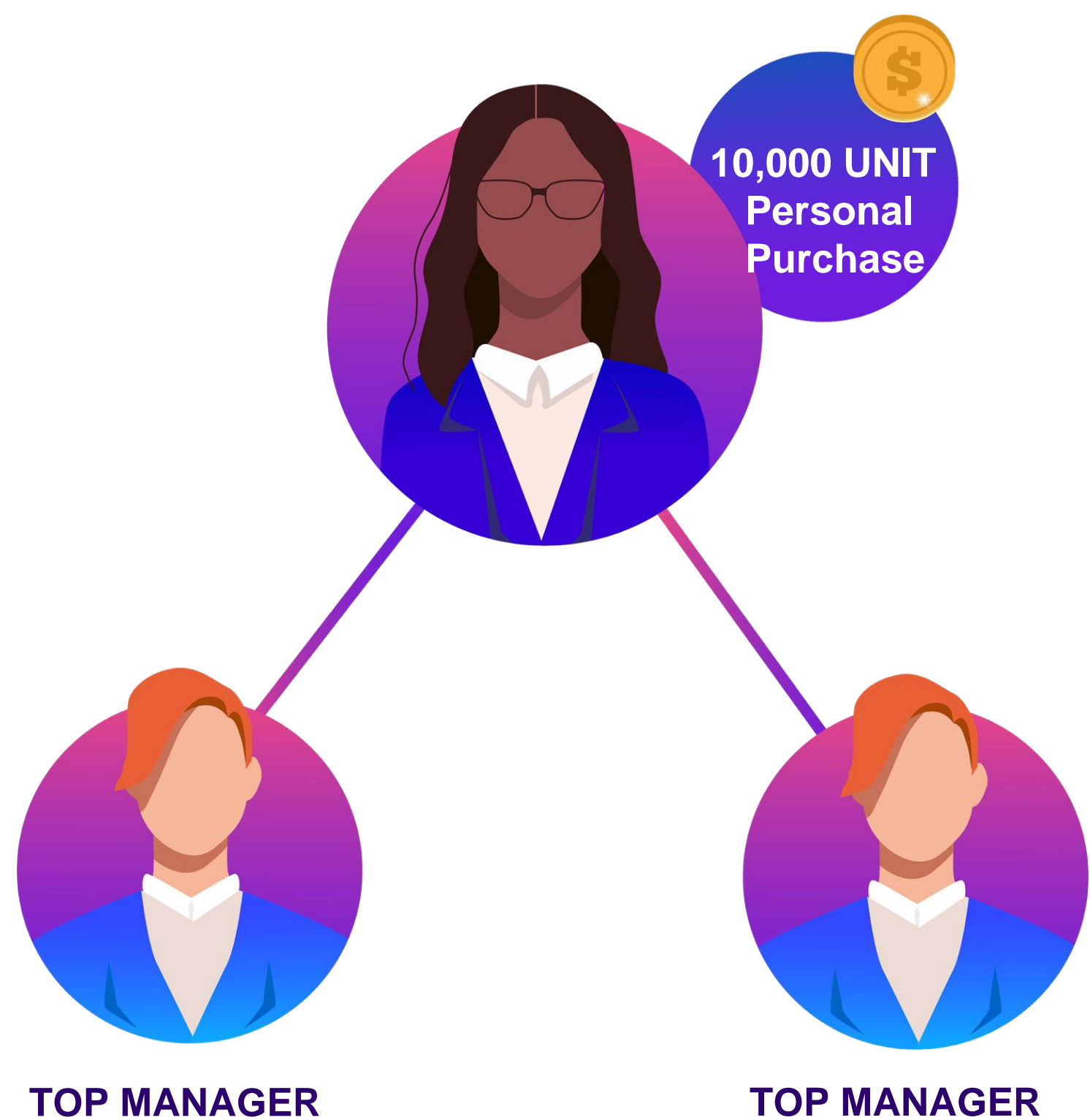
Additional prerequisites

Compulsory participation in an annual training course from Evorich or its partners in education with a subsequent test to be taken within 6 months after the training and passed with a score of more than 55%.

If the test score is lower than 55%, the status is automatically downgraded to Leader Manager.

(The status is automatically restored when the test is passed with the score of 55% or higher).

VICE-PRESIDENT



REFERRAL BONUS		
LEVEL	VICE PRESIDENT'S COMMISSION	DIFFERENCE FROM THE PREVIOUS LEVEL "TOP MANAGER"
1	8%	8%
2	8%	8%
3	5%	5%
4	4%	4%
5	3%	3%
6* and lower	from 9 to 10%	from 8 to 9%

Remuneration

Vice-President can receive bonus units under the Partner Program. For that, they need to accept the Terms of Use and make sure to complete the account verification.

Qualification Conditions

- Required status: Top Manager.
- Must make a personal purchase for a total of 10,000 units or more.
- Must have 2 persons with the status of Top Manager and higher on the first level.

VICE-PRESIDENT

When you achieve the status of Vice-President, the income from the 6th line to infinity will be 9% to 10% in units.

Here's how you can increase it:

- to get 9.5% in units, attract to your 1st line one Vice-President;
- to get 10% in units, attract to your 1st line a second Vice-President;

When you have two Vice-Presidents in your first level, you become President and get 10% from the 6th level to infinity.

*Commissions from 9 to 10% from the 6th level to infinity are reallocated depending on the number of qualified partners in your first line. These conditions can only be accessed by qualified Consultants and above.

Withdrawal

Minimum withdrawal amount from the Bonus account is 50 units.

Additional prerequisites

Compulsory participation in an annual training course from Evorich or its partners in education with a subsequent test to be taken within 6 months after the training and passed with a score of more than 55%.

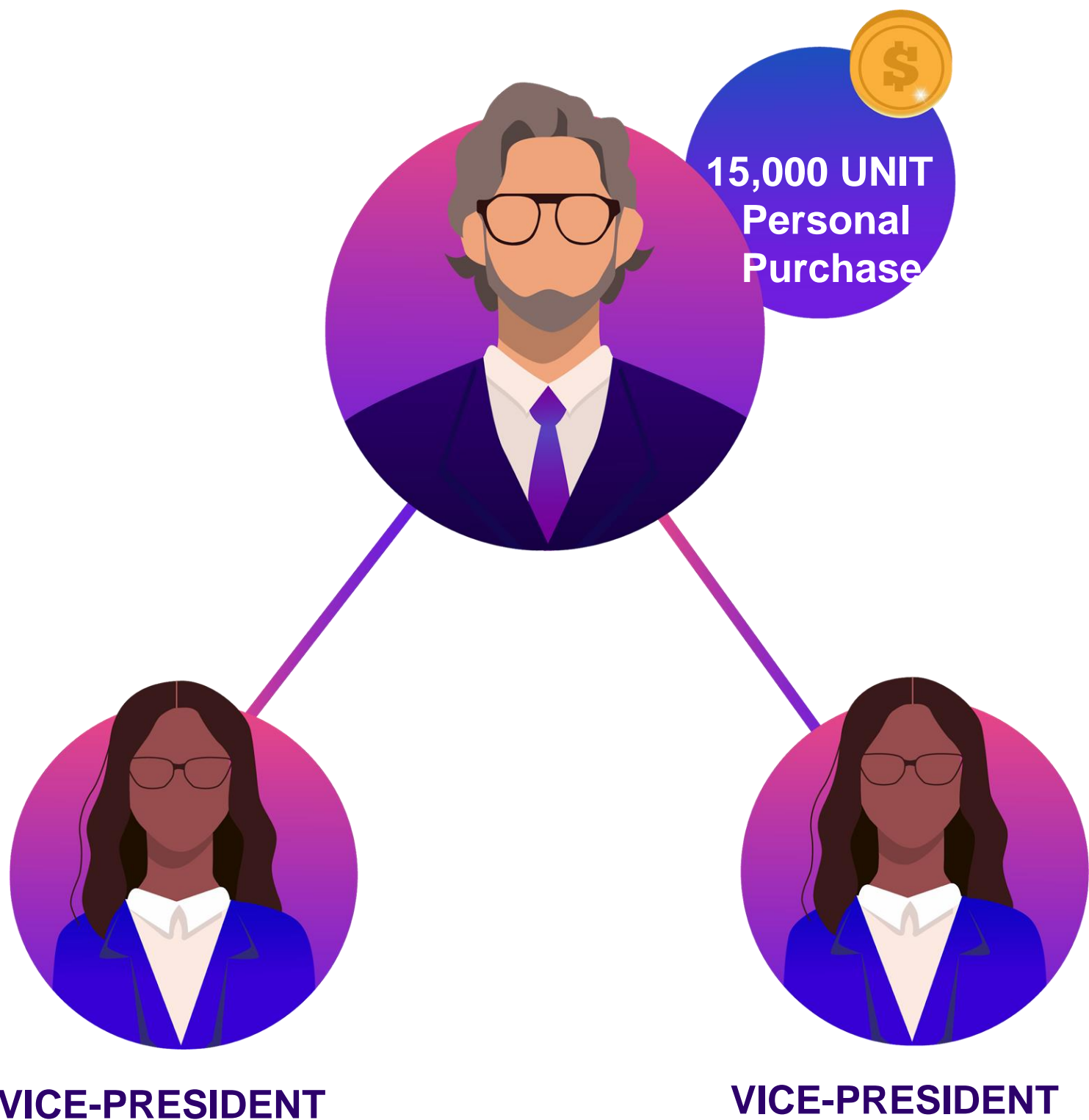
If the test score is lower than 55%, the status is automatically downgraded to Top Manager.

(The status is automatically restored when the test is passed with the score of 55% or higher).



EVORICH

PRESIDENT



REFERRAL BONUS

LEVEL	PRESIDENT'S COMMISSION	DIFFERENCE FROM THE PREVIOUS LEVEL "VICE-PRESIDENT"
1°	8%	8%
2°	8%	8%
3°	5%	5%
4°	4%	4%
5°	3%	3%
6* and lower	from 10 to 12%	from 9 to 10%

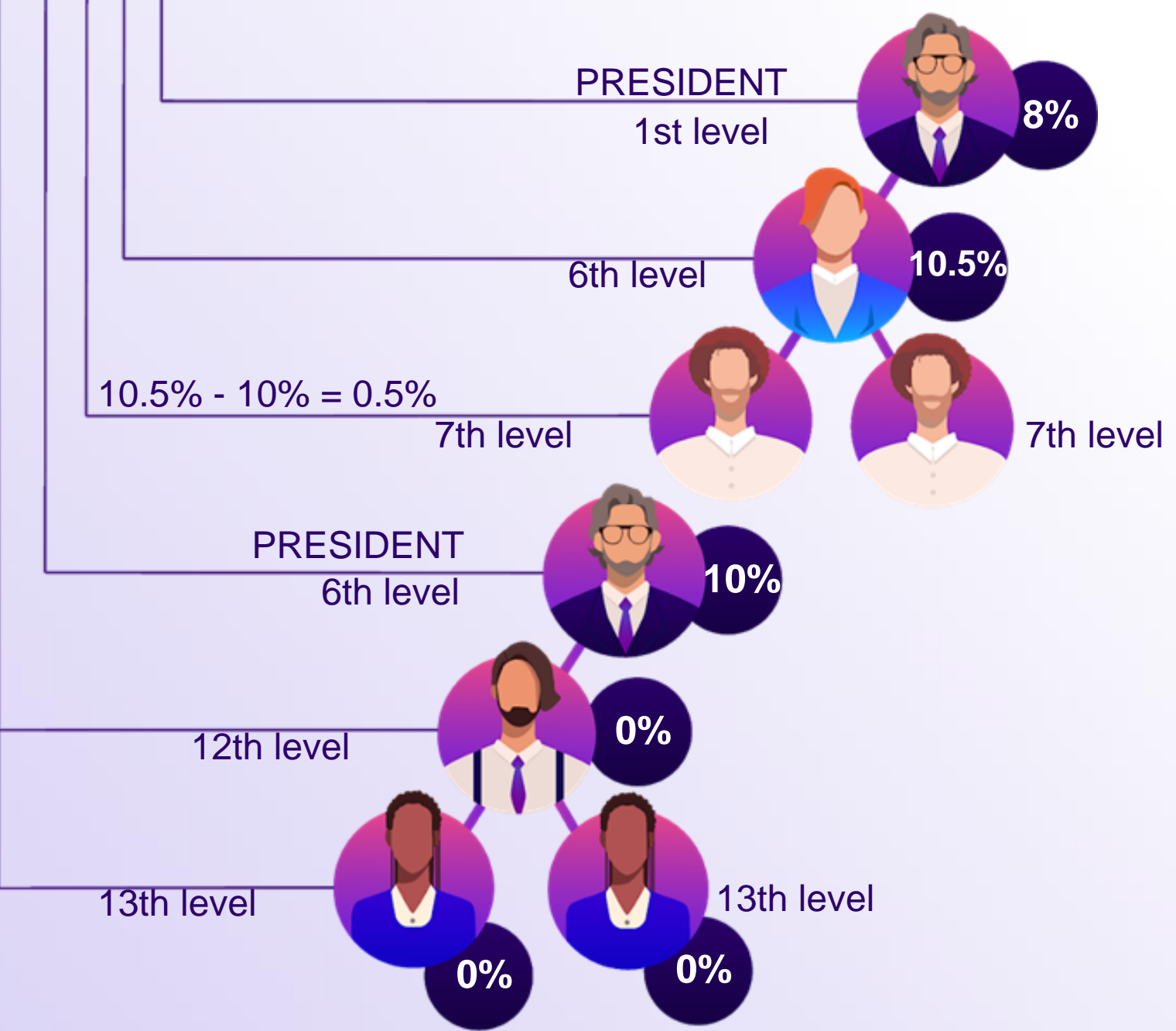
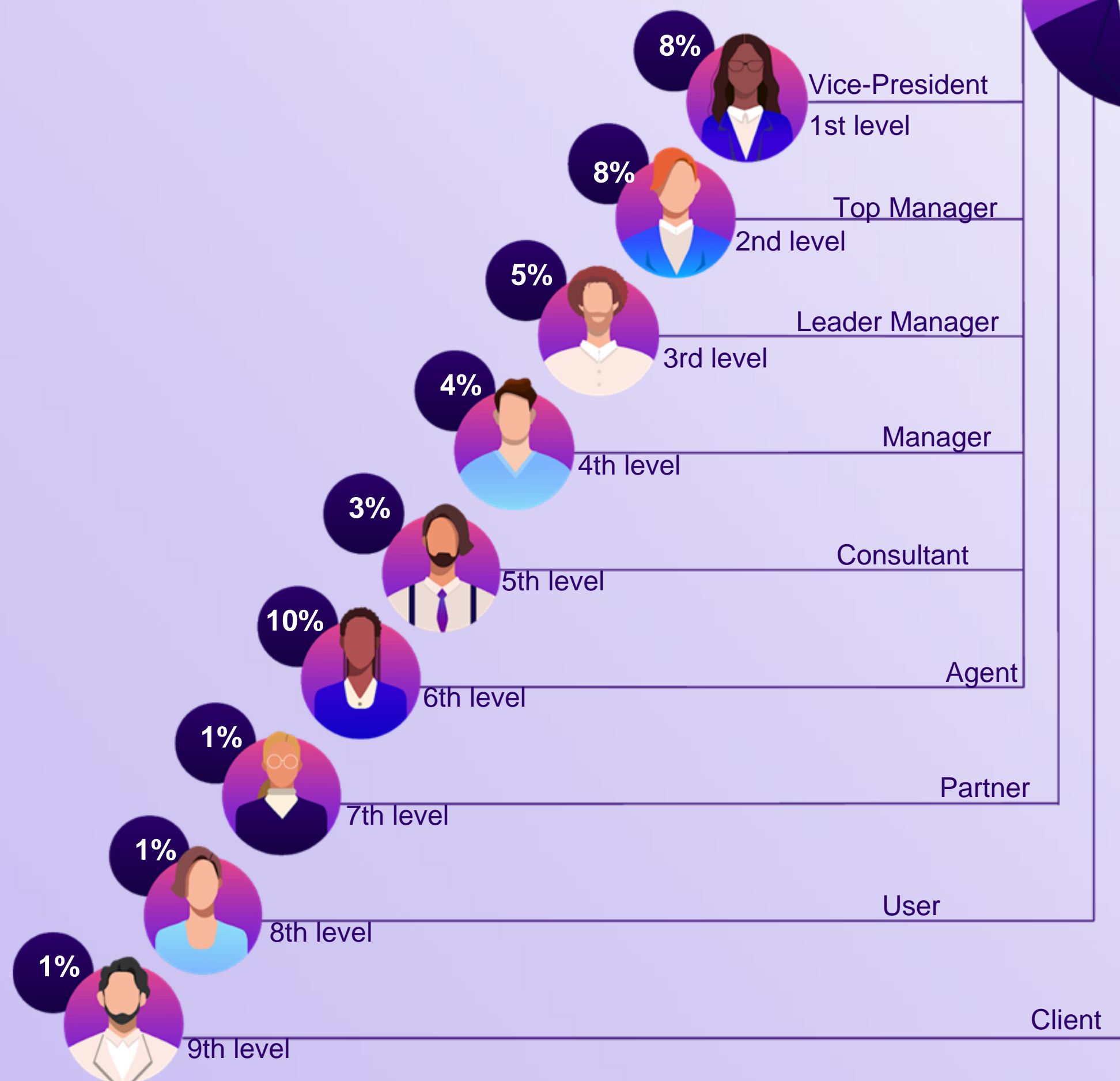
Remuneration

President can receive bonus units under the Partner Program. For that, they need to accept the Terms of Use and make sure to complete the account verification.

Qualification Conditions

- Required status: Vice-President.
- Must make a personal purchase for a total of 15,000 units or more.
- Must have 2 persons with the status of Vice President and higher in the first level.

PRESIDENT



PRESIDENT

When you achieve the status of President, the income from the 6th line to infinity will be 10 to 12% in units.

Here's how you can increase it:

- to get 10.5% in units, attract to your 1st line one President;
- to get 11% in units, attract to your 1st line a second President;
- to get 11.5% in units, attract to your 1st line a third President;
- to get 12% in units, attract to your 1st line a fourth President;

*Commissions from 10 to 12% from the 6th level to infinity are reallocated depending on the number of qualified partners in your first line. These conditions can only be accessed by qualified Consultants and above.

Withdrawal

Minimum withdrawal amount from the Bonus account is 50 units.

Additional prerequisites

Compulsory participation in an annual training course from Evorich or its partners in education with a subsequent test to be taken within 6 months after the training and passed with a score of more than 55%.

If the test score is lower than 55%, the status is automatically downgraded to Vice President.

(The status is automatically restored when the test is passed with the score of 55% or higher).

TABLE #1:

Bonuses in percentages and the required Personal Purchase Volume (PPV) to achieve the rank

Rank/Level	PPV in UNT	1	2	3	4	TOTAL, %
User		5%	3%	2%		10%
Client	10	6%	4%	3%	2%	15%

TABLE #2:

Bonuses in percentages and the required Personal Purchase Volume (PPV) to achieve the rank

Status/Level	PPV in UNT	1	2	3	4	5	6 and beyond	TOTAL, %
Partner	50	7%	5%	4%	3%	2%		21%
Agent	200	8%	7%	5%	4%	3%		27%
Consultant	500	8%	8%	5%	4%	3%	2% - 4%	32%
Manager	1,000	8%	8%	5%	4%	3%	4% - 6.5%	34.5%
Leader Manager	2,500	8%	8%	5%	4%	3%	6.5% - 8%	36%
Top Manager	5,000	8%	8%	5%	4%	3%	8% - 9%	37%
Vice-President	10,000	8%	8%	5%	4%	3%	9% - 10%	38%
President	15,000	8%	8%	5%	4%	3%	10% - 12%	40%

TABLE #3:

DESCRIPTION OF BONUSES BY LEVELS

Status	Bonuses by levels	Number of qualified partners in the 1st level that affects the changes in the commissions from the 6th level and beyond.			
Consultant	2%-4%	1 personal Consultant	2 personal Consultants	3 personal Consultants	4 personal Consultants
		2.5%	3%	3.5%	4%
Manager	4%-6.5%	1 personal Manager	2 personal Managers	3 personal Managers	4 personal Managers
		5%	5.5%	6%	6.5%
Leader Manager	6.5%-8%	1 personal Leader Manager	2 personal Leader Managers	3 personal Leader Managers	4 personal Leader Managers
		7%	7.3%	7.6%	8%
Top Manager	8%-9%	1 personal Top Manager	2 personal Top Managers		
		8.5%	9%		
Vice-President	9%-10%	1 personal Vice-President	2 personal Vice-Presidents		
		9.5%	10%		
President	10%-12%	1 personal President	2 personal Presidents	3 personal Presidents	4 personal Presidents
		10.5%	11%	11.5%	12%

Reallocation of bonuses among qualified partners from the 6th level and beyond.

Commissions from 2% to 12% from the 6th level to infinity are reallocated depending on the number of qualified partners in your first line. These conditions can only be accessed by qualified Consultants and above.

The company allocates a total of 40% of the sales to the affiliate network.

The company reserves the right to make changes and additions subject to prior consideration by the Strategic Council.

40% is the maximum commission from the sales reallocated among all the participants in the Bonus Plan.



